

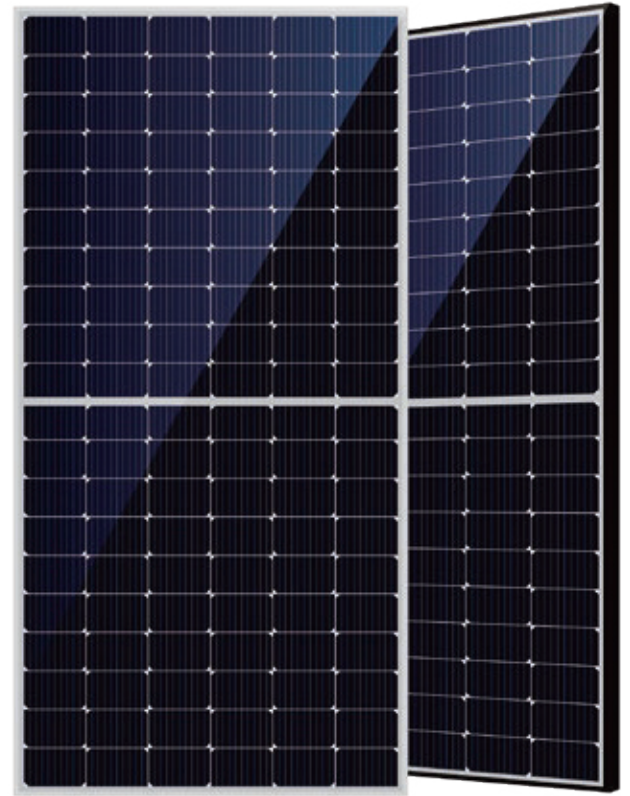
HEGA-Mo Series

166mm half cut cell technology

360-380W

20.8% MODULE EFFICIENCY **0~+5w** POSITIVE POWER TOLERANCE

TYPE: HGT-S120|M6H-XXX



380w

Max. Power Output



HIGH CUSTOMER VALUE

- Lower LCOE (Levelized Cost Of Energy), reduced BOS (Balance Of System) cost, shorter payback time
- Lower guaranteed first year and annual degradation
- Designed for compatibility with existing mainstream system components



HIGH RELIABILITY

- Minimized micro-cracks with innovation non-destructive cutting technology ensured PID resistance through cell process and module material control.
- Mechanical performance up to 5400 Pa positive load and 2400 Pa negative load



HIGH ENERGY YIELD

- Excellent IAM (Incident Angle Modifier) and low irradiation performance, validated by 3rd party certifications
- The unique design provides optimized energy production under inter-row shading conditions



HIGH POWER UP TO 380W

- Large area cells based on 166mm silicon wafers and half-cut cell technology
- Up to 20.8% module efficiency with high density interconnect technology
- Multi-busbar technology for better light trapping effect, lower series resistance and improved current collection

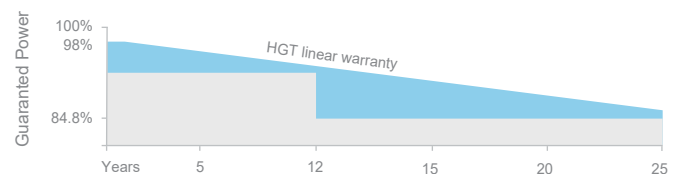
Materials and workmanship warranty **12** Years

2.00%
First Year Power Degradation

Linear power warranty **25** Years

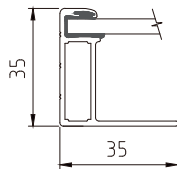
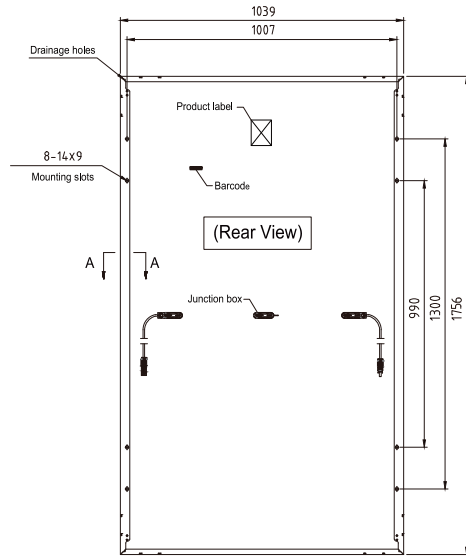
0.55%
Annual Degradation

PERFORMANCE WARRANTY



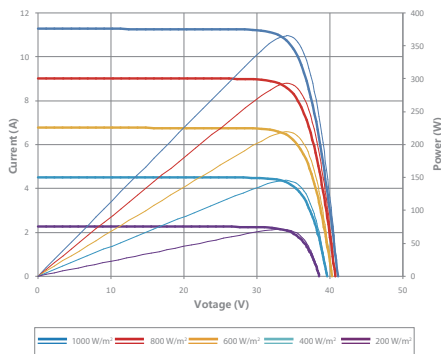
HEGA-Mo 360-380W

DIMENSIONS OF PV MODULE(mm)



A-A

Current-Voltage & Power-Voltage Curve (370W)



ELECTRICAL DATA (STC)

Maximum Power (Pmax)	360W	365W	370W	375W	380W
Power Tolerance-PMAX(W)	0 ~ +5W				
Maximum Power Voltage (Vmp)	33.9V	34.1V	34.3V	34.5V	34.7V
Maximum Power Current (Imp)	10.62A	10.71A	10.79A	10.87A	10.96A
Open Circuit Voltage (Voc)	40.5V	40.7V	40.9V	41.1V	41.3V
Short Circuit Current (Isc)	11.35A	11.42A	11.49A	11.56A	11.63A
Module Efficiency η_m (%)	19.7%	20.0%	20.3%	20.6%	20.8%

STC: Irradiance 1000W/m², Cell Temperature 25°C, Air Mass AM1.5.
*Measuring tolerance: ±3%.

ELECTRICAL DATA (NMOT)

Maximum Power (Pmax)	270.7W	274.3W	278.2W	281.8W	285.4W
Maximum Power Voltage (Vmp)	31.6V	31.8V	32.0V	32.2V	32.4V
Maximum Power Current (Imp)	8.56A	8.62A	8.69A	8.75A	8.81A
Open Circuit Voltage (Voc)	38.4V	38.5V	38.7V	38.9V	39.1V
Short Circuit Current (Isc)	9.04A	9.10A	9.17A	9.23A	9.29A

NMOT: Irradiance at 800W/m², Ambient Temperature 20°C, Air Mass AM1.5, Wind Speed 1m/s.

MECHANICAL DATA

Solar Cells	Monocrystalline silicon 166mm
No. of cells	120 cells (6x20)
Module Dimensions	1756 × 1039 × 35 mm
Weight	19.9 kg
Glass	High Transmission, AR Coated fully tempered Glass
Encapsulant Material	EVA
Frame	Anodized Aluminium Alloy
J-Box	IP 68 rated (3 bypass diodes)
Cables	4.0mm ² cable length +350mm/-350mm or customized length
Connector	MC4 Compatible

TEMPERATURE RATINGS

NMOT(Nominal Operating Cell Temperature)	42 ± 2 °C
Temperature Coefficient of P _{MAX}	-0.36%/°C
Temperature Coefficient of V _{OC}	-0.304%/°C
Temperature Coefficient of I _{SC}	0.050%/°C

(Do not connect Fuse in Combiner Box with two or more strings in parallel connection)

MAXIMUM RATINGS

Operational Temperature	-40~+85 °C
Maximum System Voltage	1500V/DC(IEC)
Max Series Fuse Rating	20A

WARRANTY

12 year Product Workmanship Warranty
25 year Power Warranty
2% first year degradation
0.55% Annual Power Attenuation

(Please refer to product warranty for details)

PACKAGING CONFIGURATION

Pieces per pallet	31
Pallets per container	26
Pieces per container 40'HC	806
Packaging box dimensions	1805x1140x1256mm
Packaging box weight	654kg